

**To:** All Distributors  
Regional Sales Managers and National Sales Manager

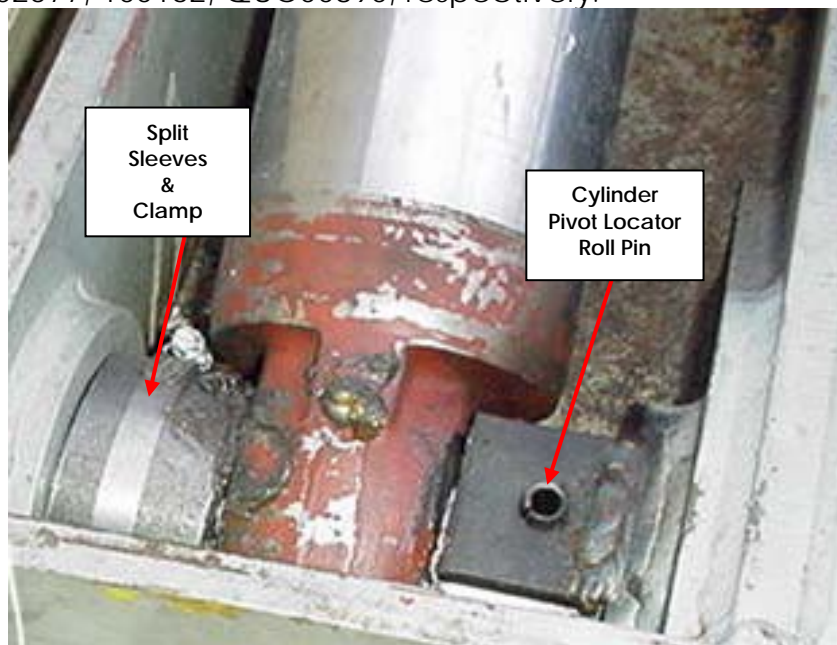
**From:** Technical Support

**Model:** Leach Rear Loaders

**Subject:** Carrier Cylinder Pivot Maintenance

Correct location of the carrier cylinder pivot is critical on the Leach 2R-III, to ensure proper carrier roller positioning and thorough engagement of the carrier cylinder pivot into the carrier hub. The items locating the carrier cylinder pivot must be inspected during every weekly planned maintenance cycle.

Ensure that the carrier cylinder pivots are positioned correctly (inserted fully), and the roll pins are properly inserted through the locating tab, fully into the locating hole in the carrier cylinder pivot. Check to ensure that the split sleeves are in place and the clamp is tight. The LabriePlus part numbers for the carrier cylinder pivot locator roll pin, split sleeves and clamp are 102577, 100162, QUC00890, respectively.



If you have any queries or require any further information please contact the Labrie Service Department at (800) 231-2771.