

To: All Distributors
Regional Sales Managers and National Sales Manager

From: Technical Service

Model: Automizer/Right Hand, Expert/Helping Hand

Subject: Arm Cylinder Cushion Adjustment

Various functions of the Labrie Right Hand and Helping Hand arms utilize cushioned hydraulic cylinders for Operator comfort and to minimize the shock load on the automated arm and related components. Ensuring that the cylinder cushions are correctly adjusted will enhance the service life of the automated arm.

The following hydraulic cylinders incorporate the cushioning feature:

Right Hand

- Slide cylinders – cushion on retract (in) only.
- Arm lift cylinder – cushion on extend (raise) and retract (lower).

Helping Hand

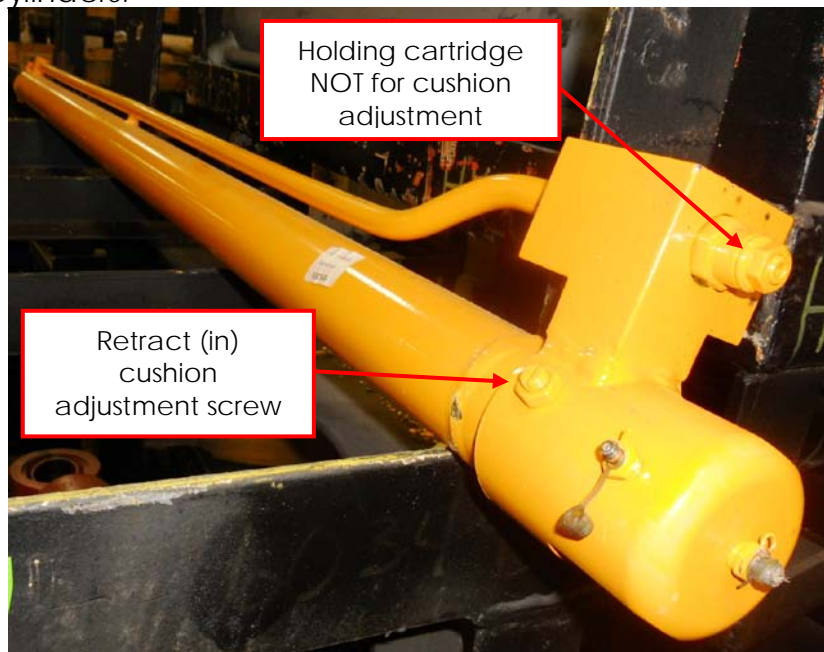
- Slide cylinder(s) – cushion on extend (out) and retract (in),
- Arm lift cylinder – cushion on extend (lower) and retract (raise).

The cushions are adjustable. The proper setting is to have the cylinder slow during approximately the last two inches (2") of travel. If the cushion is set too low, the cylinder will not slow and will fully extend/retract at full speed; if the cushion is set too high the cylinder will slow during the last two inches of travel, then the cylinder rod will move in the opposite direction one to two inches (1" – 2"), then stop.

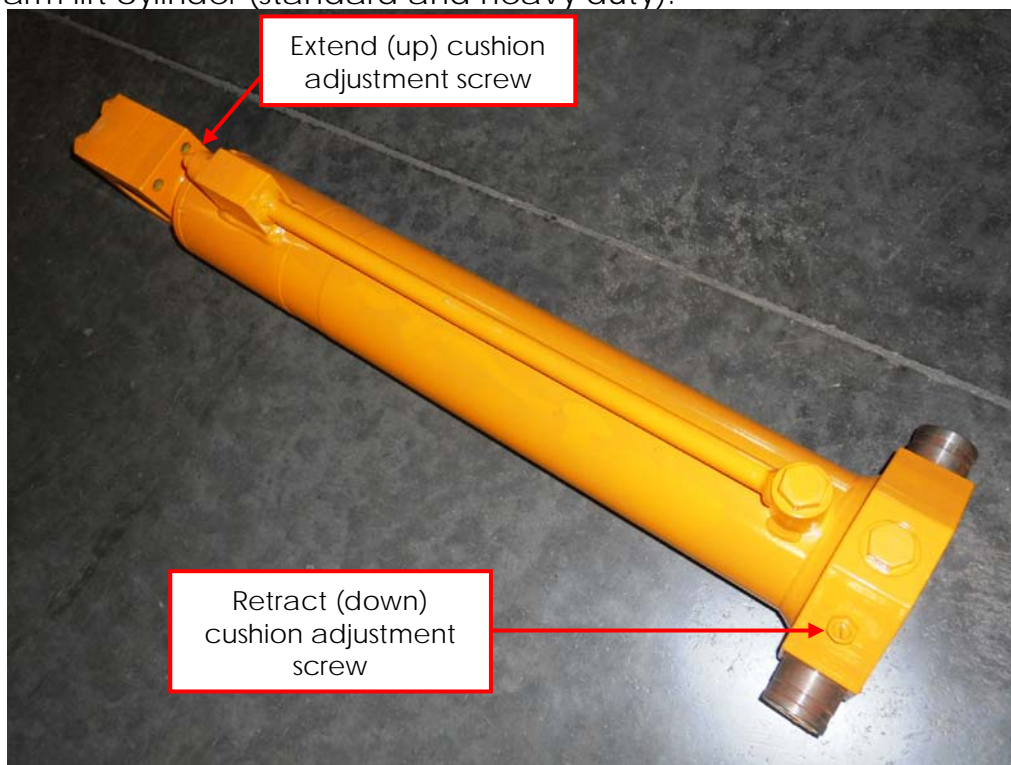
The following photos provide locations of the adjustable cushions. To adjust the cushion, loosen the jam nut on the cushion adjustment screw by turning it counter-clockwise. Turn the cushion adjustment screw in (clockwise) to increase the cushion, or out (counter-clockwise) to decrease the cushion. When finished, tighten the cushion adjustment jam nut by turning it clockwise, and re-check the cushion.

Please contact the LabriePlus Service Department at (800) 231-2771 with any questions or for further information.

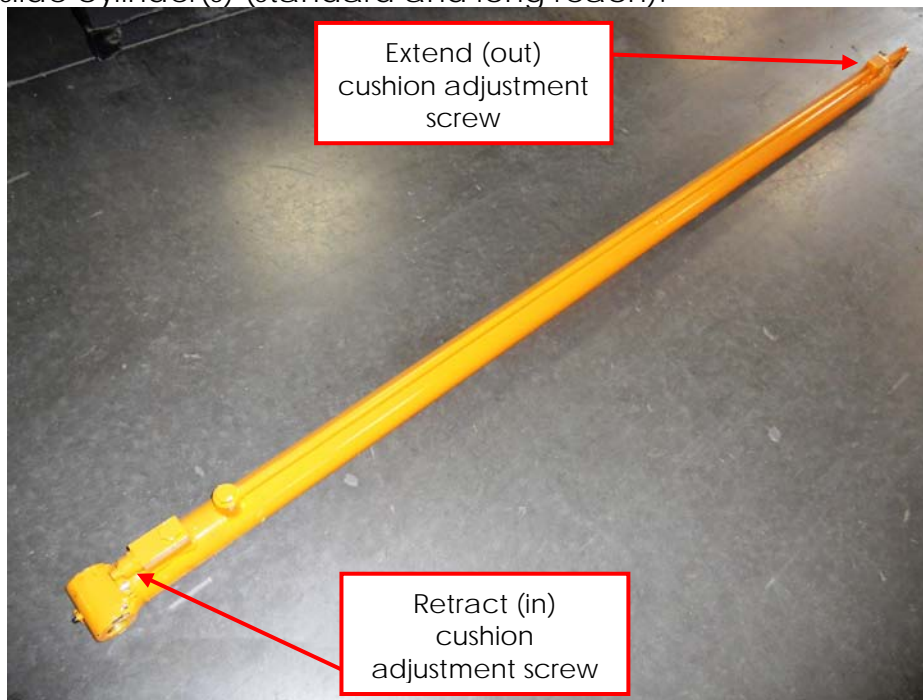
Right Hand slide cylinders:



Right Hand arm lift cylinder (standard and heavy duty):



Helping Hand slide cylinder(s) (standard and long reach):



Helping Hand arm lift hydraulic cylinder:

