

To: All Distributors
Regional Sales Managers and National Sales Manager

From: Technical Service

Model: Automizer, Expert, Minimax

Subject: Bypassing A Dump Valve For Diagnostic Purposes

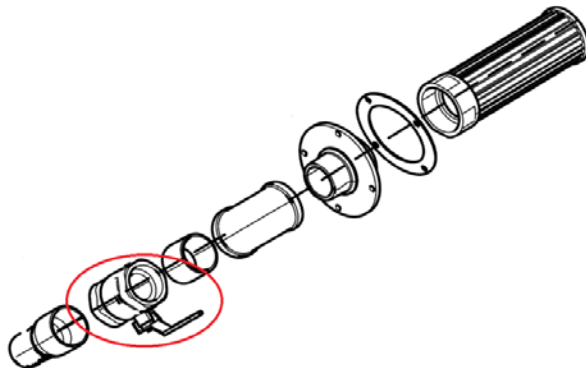
This TSB will outline the procedure for bypassing the arm dump valve off of a front mounted pump for a Labrie side loader.

When arm cycle times and pressures are not able to be achieved, typically there are 2 components that cause this: the dump (or recirculation) valve or the pump. The first step in troubleshooting is to verify that the electrical system is operating correctly. If the dump valve is receiving proper power and ground, causing the coil to magnetize, then we can continue with bypassing the arm dump valve. What we'll do is remove the dump valve all together and verify operation. If the arm operates with the correct cycle times and pressures, then we can conclude that the dump valve is faulty and needs to be replaced.

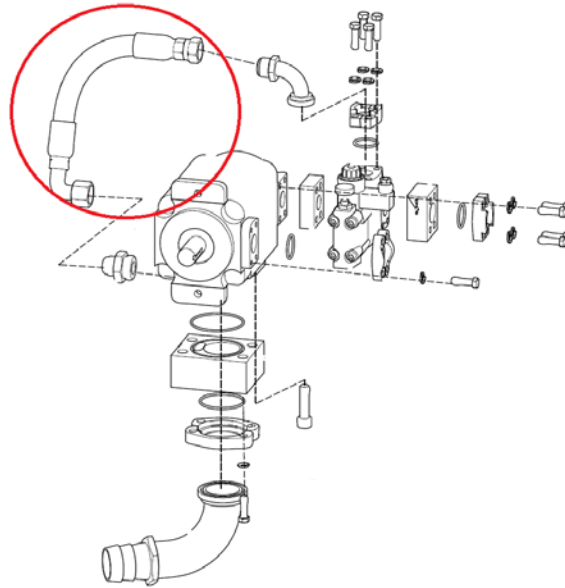
However, should the arm continue to have slow cycle times and low pressures, then the fault more than likely is with the pump.

How to bypass the arm pump dump valve on a front mounted pump

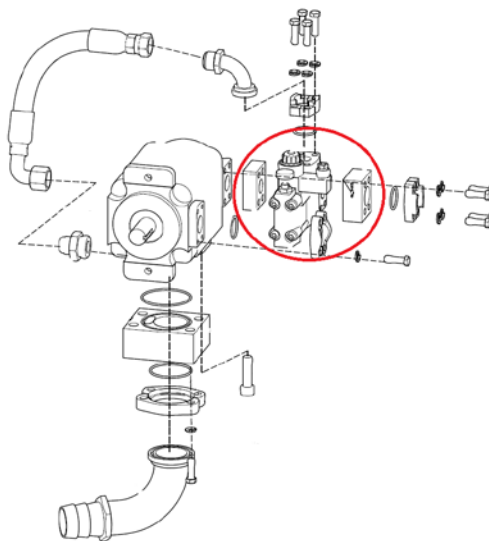
- 1) The truck should be off and locked out/tagged out following all required procedures.
- 2) Relieve the air pressure from the hydraulic tank.
- 3) Close the ball valve on the suction line that's behind the hydraulic tank.



- 4) Unplug the arm pump dump valve electrical connector and stow the harness safely out of the way.
- 5) Remove the recirculation hose from the arm dump valve to the body pump and cap off the port at the body pump.



- 6) Remove the arm dump valve and orifice block and reinstall the pressure line, this was connected to the arm dump valve, directly to the arm pump. You'll need shorter bolts to tighten it down.



- 7) Open the ball valve that was closed in step 3.
- 8) Start the truck, **please note** that the second the truck is running there will be hydraulic fluid going to the arm valve assembly. The e-stop will not stop the hydraulics from working, only turning the truck off will. Ensure everyone, and everything, is out of the way of the arm in case it moves on its own should there be an electrical short or a catastrophic failure internal to the valve assembly.

Now that the arm dump valve is bypassed we'll be able to identify if the arm pump or arm dump valve is faulty. Simply go to the arm valve assembly and operate the arm manually. If the cycle times and pressures are correct then the arm dump valve is faulty. If the cycle times and pressures are still not correct, then the arm pump is faulty.

Assembly is the opposite of disassembly.

Please contact the LabriePlus Service Department at (800) 231-2771 with any questions or for further information.