

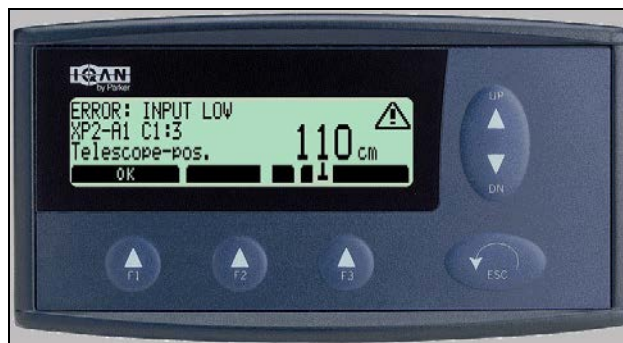
To: All Distributors
Regional Sales Managers and National Sales Managers

From: Technical Service

Model: All (Labrie/Leach/Wittke)

Subject: IQAN MDM Programming

These are the basic steps in utilizing the Parker IQAN diagnostic software to; retrieve an existing program for modification/storage and to load a modified or existing program into a MDM.



To Extract A Program

Step 1

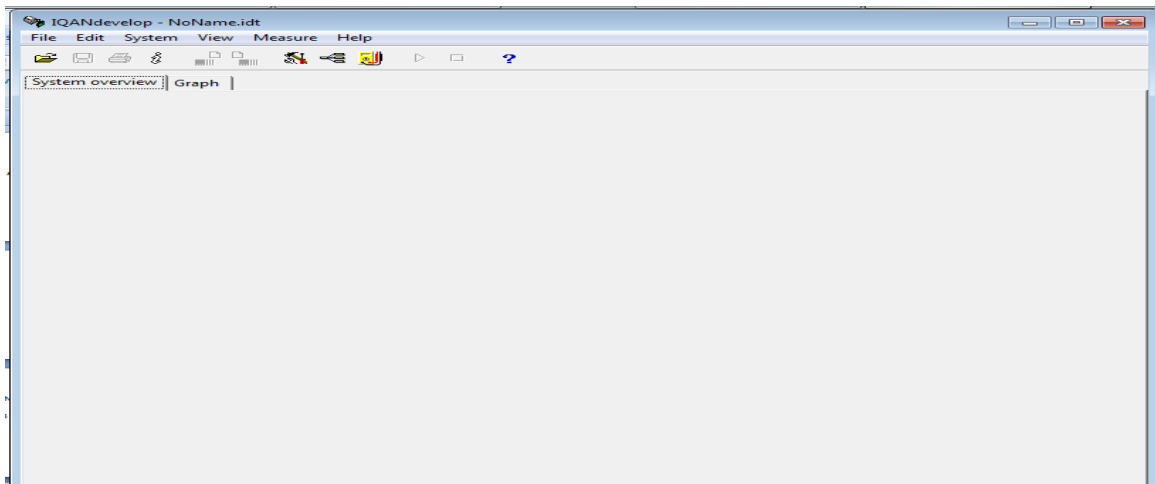
- Connect diagnostic cable 0059-756 to both the laptop and MDM.



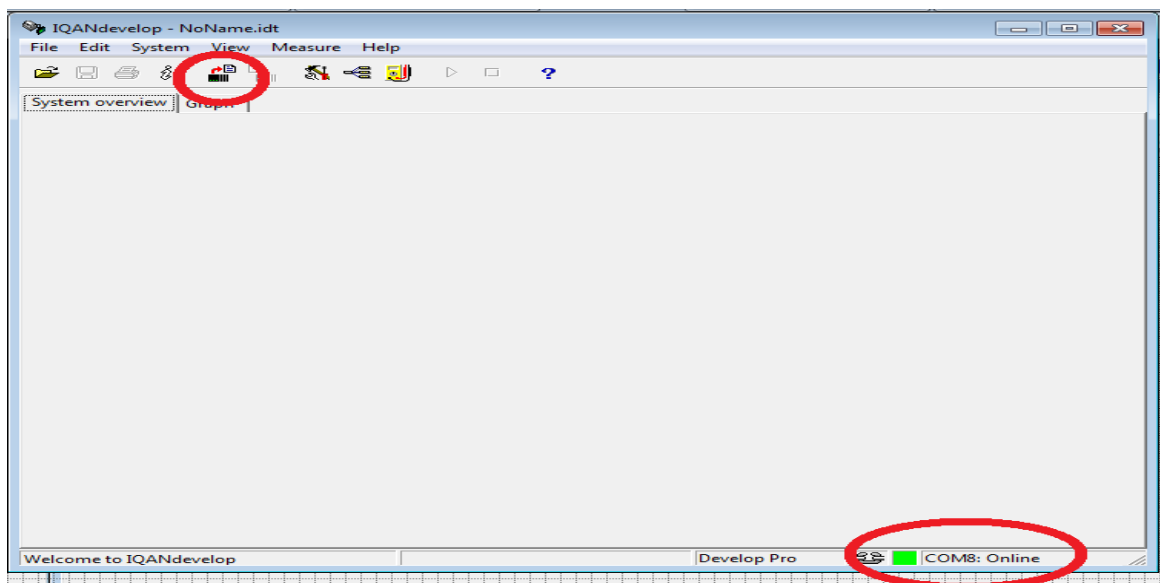
- Turn on the ignition to power up the MDM.

Step 2

- Open the Parker IQAN DEVELOP software and the following screen should appear.

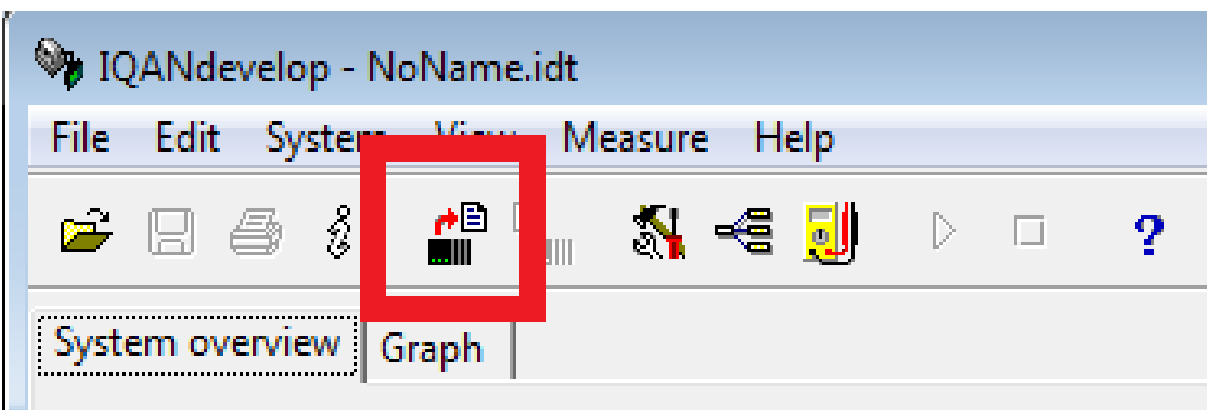
**Step 3**

- With the MDM powered up, you should see the following two spots highlighted on the screen, indicating a good connection.

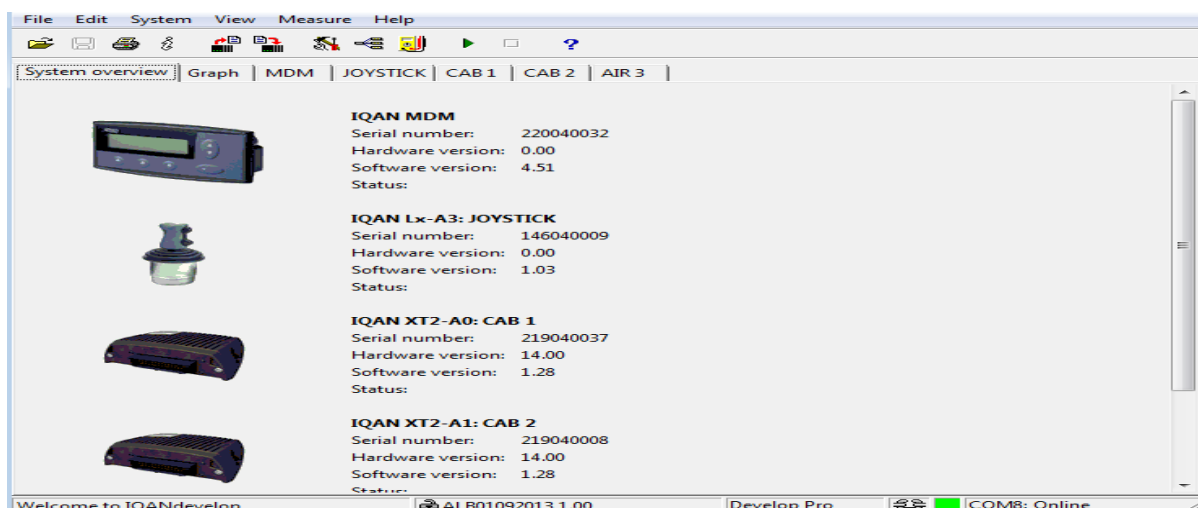


STEP # 4

- Extract the file by clicking the icon highlighted below.
- The file will extract the data automatically, loading the screen with all system information.
- When this task is completed, click **FILE**, **SAVE AS** and save the file (.idt format) to the PC.

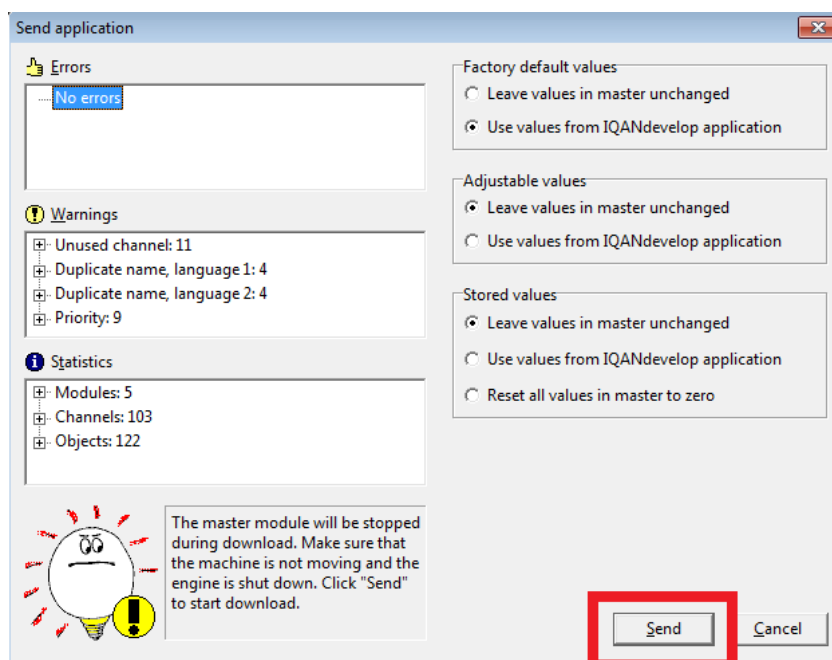
**To Send A Program To The IQAN System****STEP # 1**

- When the new file has been obtained, save it to the PC, and double click the file.
- When the file opens, it already has all information loaded into it.



STEP # 2

- Click "**SEND CURRENT**" once and a warning screen will appear.
- When this screen appears, click **SEND**. The program will be loaded in automatically.



Please contact the LabriePlus Service Department at (800) 231-2771 with any questions or for further information.