

To: All Distributors
Regional Sales Managers and National Sales Manager

From: Technical Support

Model: All With Labrie Right Side Drive Cab Modification

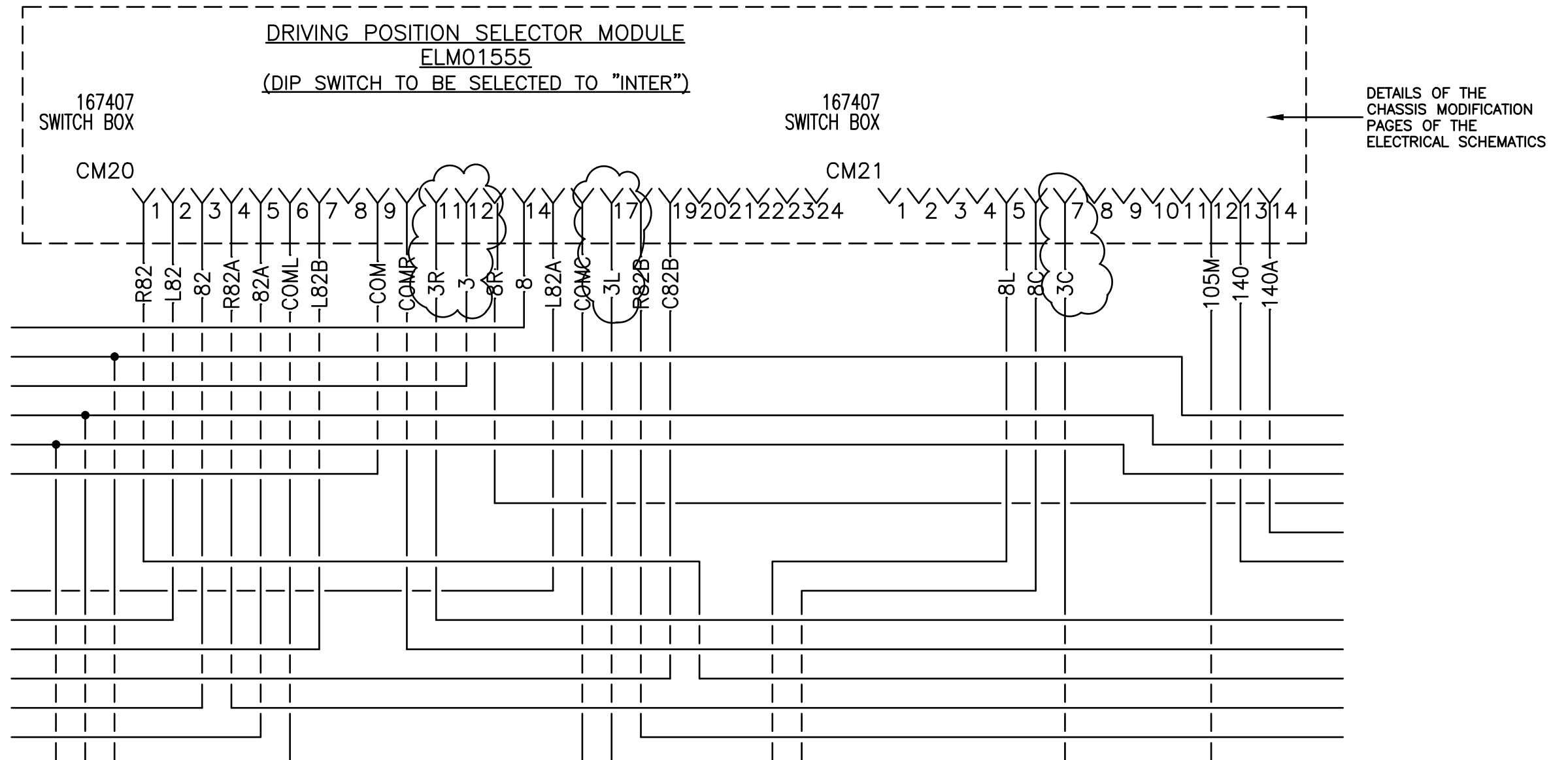
Subject: Throttle Pedal Circuit Modification

The manufacturer of the LabriePlus part number ELP01060 throttle pedal incorporated into the Labrie right side drive cab modification has changed the internal components of this assembly. This change occurred in mid-2016.

When replacing this part on a unit manufactured prior to the change, a chassis TPS fault code may be displayed. If this occurs, the throttle pedal circuit wiring must be modified to accept the revised component. The attached illustration describes the required modification.

Please contact LabriePlus at (800) 231-2771 with any questions or for further information.

**Replacement Throttle Pedal Wire
Modification**



HARNESS MODIFICATION

- 1) REMOVE IN CM20: WIRES 3R PIN 11, 3 PIN 12, 3L PIN 17
REMOVE IN CM21: WIRE 3C PIN 7
- 2) SPLICE THE 4 WIRES TOGETHER