

To: All Distributors
Regional Sales Managers and National Sales Manager

From: Technical Support

Model: Expert

Subject: Hopper Door Latch Inspection & Adjustment Procedure

The hopper doors on the Expert body are equipped with latches to keep the door secured in both the closed and open positions. Periodic inspection and maintenance of these latches is necessary to ensure the door is properly supported. Failure to keep the latches properly adjusted can cause excess fatigue on the other components of the door, including the hinges.

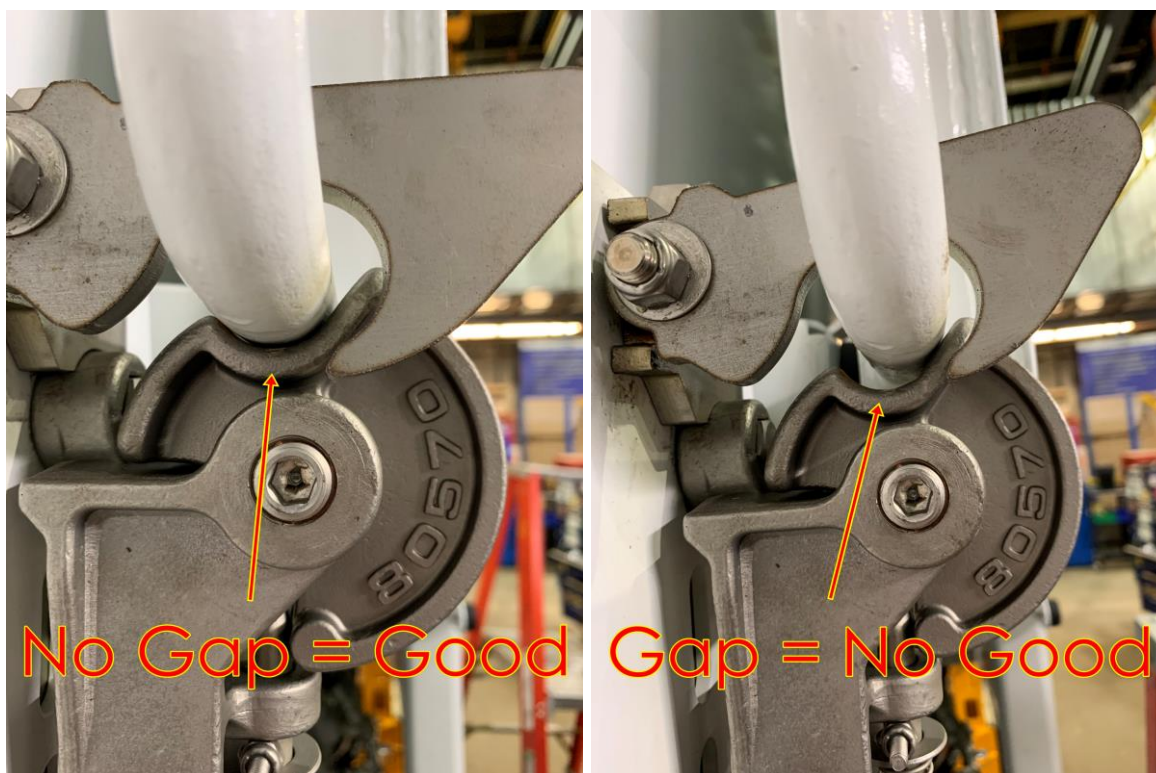
The following procedure should be performed on a monthly basis:

Be sure to follow all appropriate lockout tag out procedures and work instructions as contained in service and repair manuals as well as your standard shop/facility procedures before attempting these procedures.

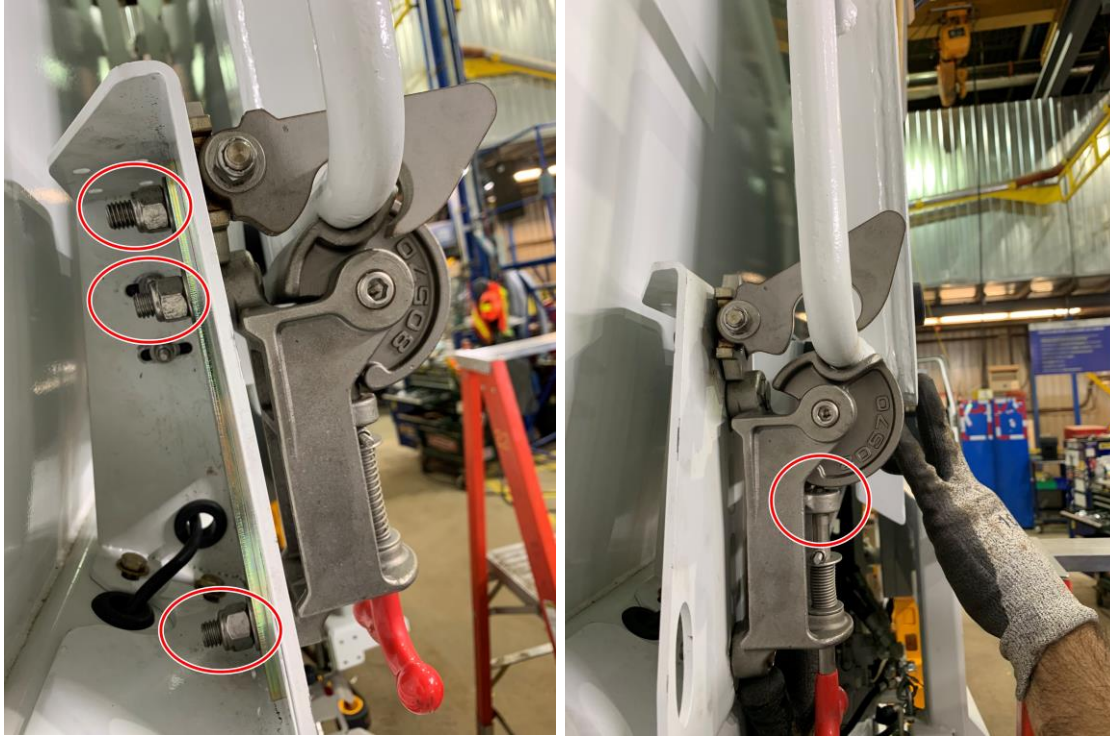
1. Locate the hopper door latches on both sides of the body.
(Procedure is the same for all four latches.)



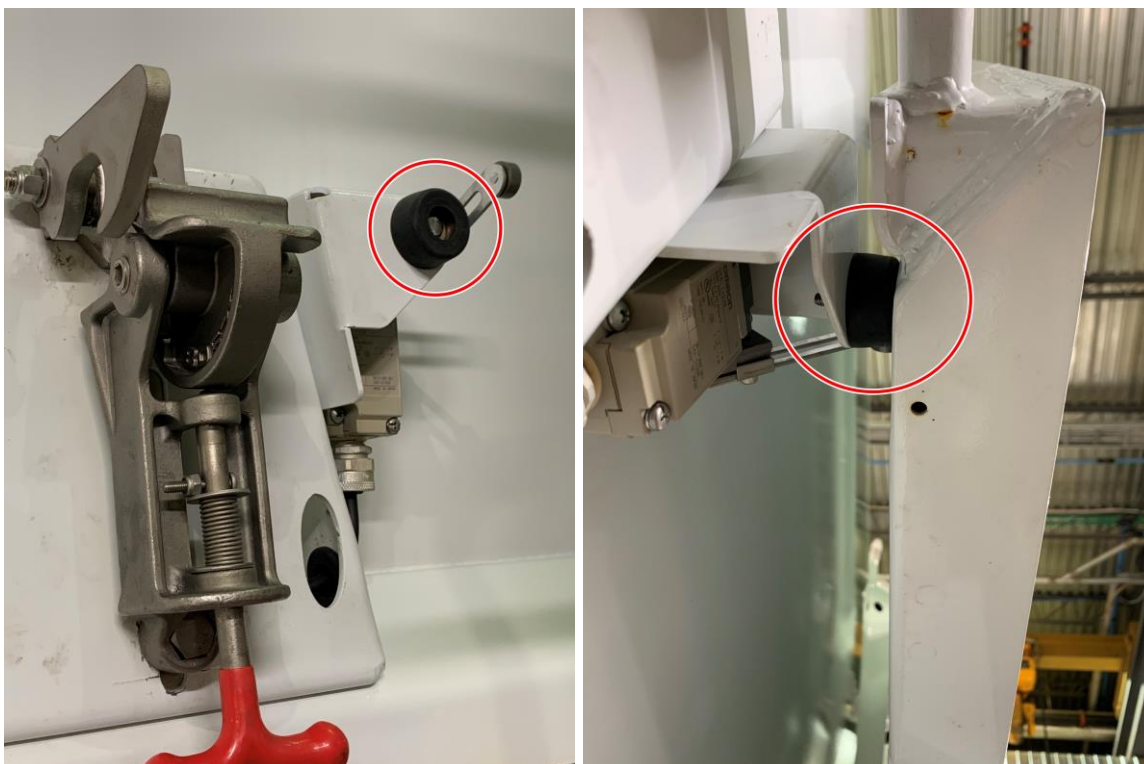
2. With the door in the latched position, verify there is no gap between the door handle and the latch cam. Also verify there is no excessive wear on any of the hopper door components including but not limited to the hinges and rubber bumpers. Replace any worn parts before continuing with the adjustment.



3. If no gap is present between the door handle and latch proceed to **Step 8**. If there is a gap present, then proceed to **Step 4**.
4. Loosen the three nuts securing the latch to the body
5. With the latch in the un-locked position, hold slight up pressure on the latch while pushing in on the door until the latch is almost locked.
6. Tighten the three nuts securing the latch to the body while holding slight up pressure on the latch.



7. Re-check the gap between the door handle and latch cam, if a gap is still present repeat **Steps 4-6**.
8. Once the latch is properly adjusted, verify the door is resting securely against the rubber bumper. Proper adjustment of this bumper is necessary to reduce door vibration while the door is latched. There should be slight pressure on the bumper.



9. If there is a gap present between the door and bumper, the bumper bracket should be adjusted, or shims can be added behind the bumper.
10. Repeat procedure for all remaining door latches.

Please contact the LabriePlus Service Department at (800) 231-2771 with any questions or for further information.