

To: All Distributors
Regional Sales Managers and National Sales Manager

From: Technical Development Manager

Model: Leach Rear Loader

Subject: RS130 Cart Tipper Update

Labrie has updated the upper saddle bracket, (part number 180458) for the HYV03631-02 rotary actuator tipper.

This update allows for a positive lock on a broader range of cans than offered previously.

The newly modified saddle bracket is now taller, as well as utilizing two sets of slotted mounting holes for a greater range of adjustability.

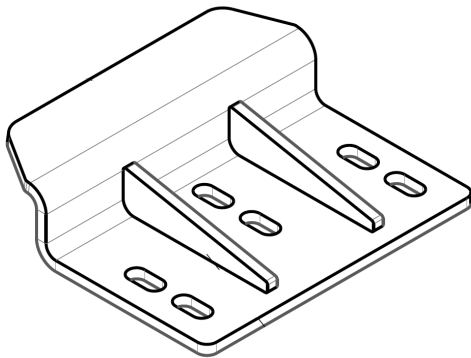


Figure 1: Bracket 180458

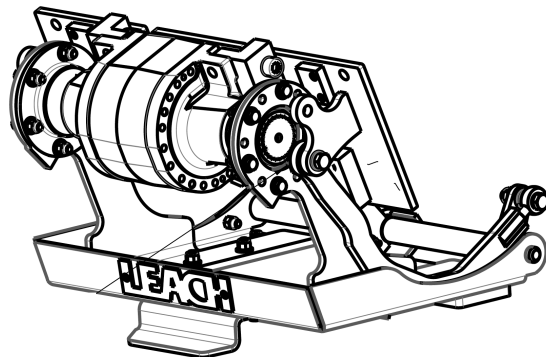


Figure 2: Rotary Actuator Tipper HYV03631-02

Please contact the LabriePlus Service Department at (800) 231-2771 with any questions or for further information.