

To: All Distributors, Regional Sales Managers and National Sales Manager

From: LabriePlus Service

Model: AU, EX & MX

Subject: Helping Hand™ Arm Pivot Pin Update

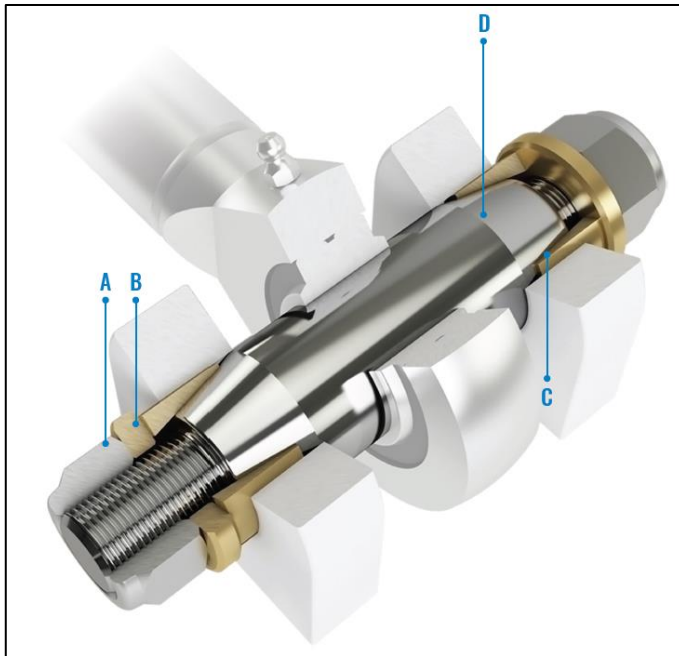
The dump arm pivot and up/down cylinder pivot pins on the Helping Hand™ arm have been updated to a new design. The existing straight pin and keyless locking devices have been replaced by an Expander System® pivot pin assembly. The expansion sleeves used on the Expander System® pins are more robust and will allow for a wider tolerance in the mounting lug. The new pivot pins will work on all previous versions of the Helping Hand™ arm without any modifications. Another benefit is they are quick and easy to install and remove compared to the prior keyless locking devices.

The following assemblies will replace the previous keyless locking devices and straight pins.

New P/N	Replaces P/N
Qty. 1 QUB07500 – Dump Arm Pivot	Qty. 2 QUB00498 & Qty. 1 64507
Qty. 1 QUB07510 – Up/Down Cylinder Pivot	Qty. 2 QUB00495 & Qty. 1 64504



Please contact the LabriePlus Service Department at **(800) 231-2771 (US)** or **(877) 452-2743 (CAN)** for questions or further information



The Expander System® pin consists of four main parts:

- A. Fasteners
- B. Tension Washers
- C. Sleeves
- D. Tapered Pin

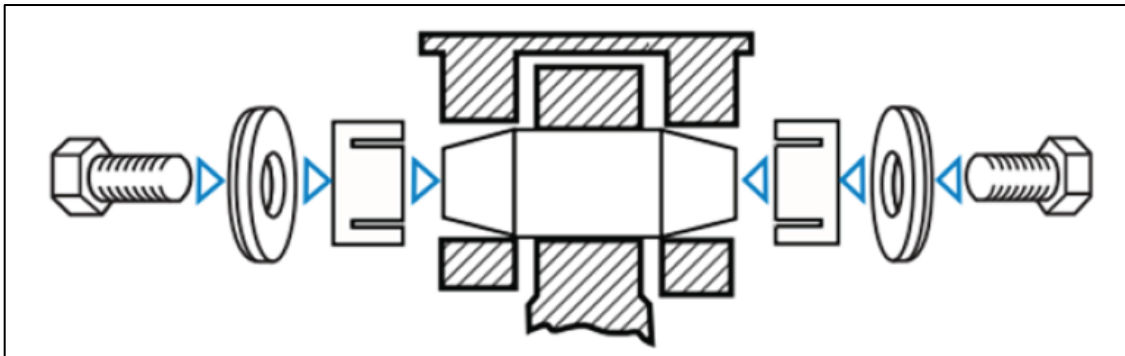
Installation:

- Grease the sleeves and tapered pin. Do not grease the threads!
- Insert the tapered pin and center it between the bores.
- Install the sleeves, then tension washers and fasteners. **[Fig. 1]**
- Cross-tighten the fasteners to the specified torque.
- Grease the pivot.
- After the initial torque, move the arm through full range of motion several times and recheck torque.
- Check the torque after 10 hours, 40 hours and at regular service intervals to ensure proper seating of the sleeves.

Part Number	Torque
QUB07500	258 lb-ft / 350 Nm
QUB07510	184 lb-ft / 250 Nm

Please contact the LabriePlus Service Department at **(800) 231-2771 (US)** or **(877) 452-2743 (CAN)** for questions or further information

Fig. 1



Removal:

- Unscrew the fasteners from both sides and remove the tension washers. **[Fig. 2]**
- Tap the axle alternatively on left and right side until the tension on the sleeves is released (use a piece of pipe between the axle and the mallet/hammer to prevent damage to the threads). **[Fig. 3]**
- Remove the sleeves and tapered pin.

Fig. 2

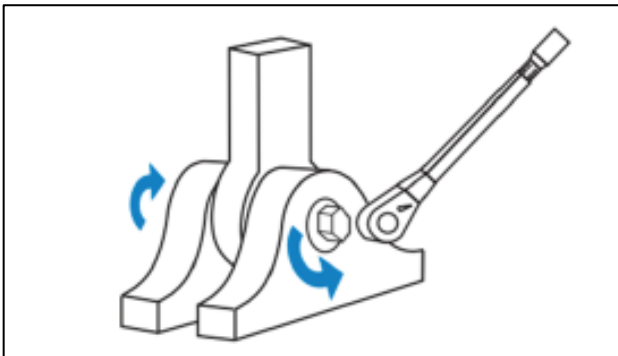
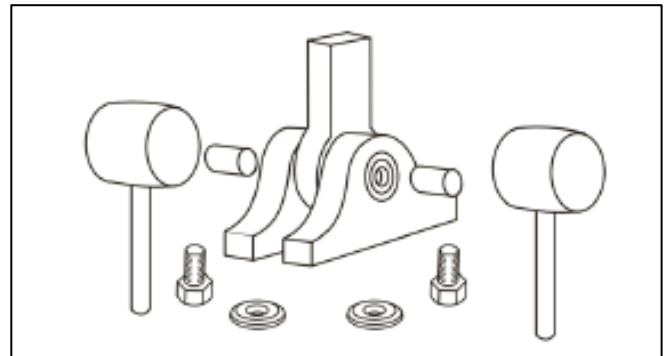


Fig. 3



Please contact the LabriePlus Service Department at **(800) 231-2771 (US)** or **(877) 452-2743 (CAN)** for questions or further information