

To: All Distributors, Regional Sales Managers, and National Sales Manager

From: LabriePlus Service

Model: Expert T, Automizer

Subject: Pressurized Hydraulic Reservoir

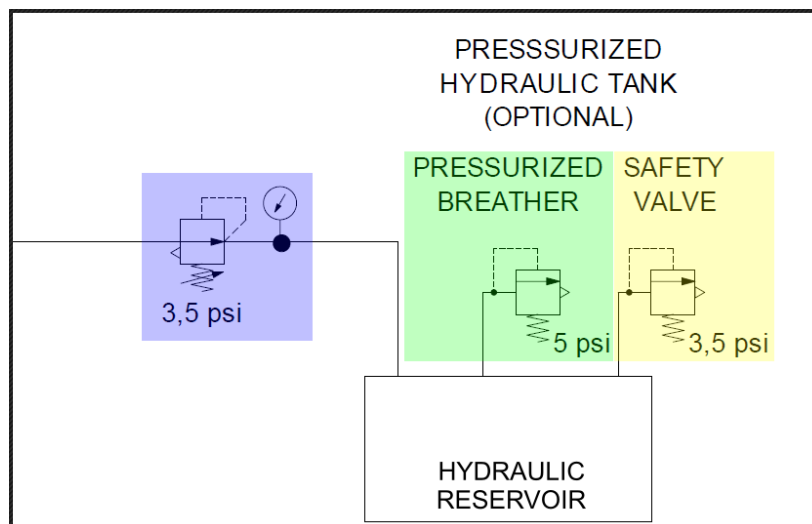
In order to prevent pump cavitation and ease the oil flow to the pump inlet, Labrie pressurizes the Expert T and Automizer hydraulic reservoir.

This pressurization circuit is made of 3 components.

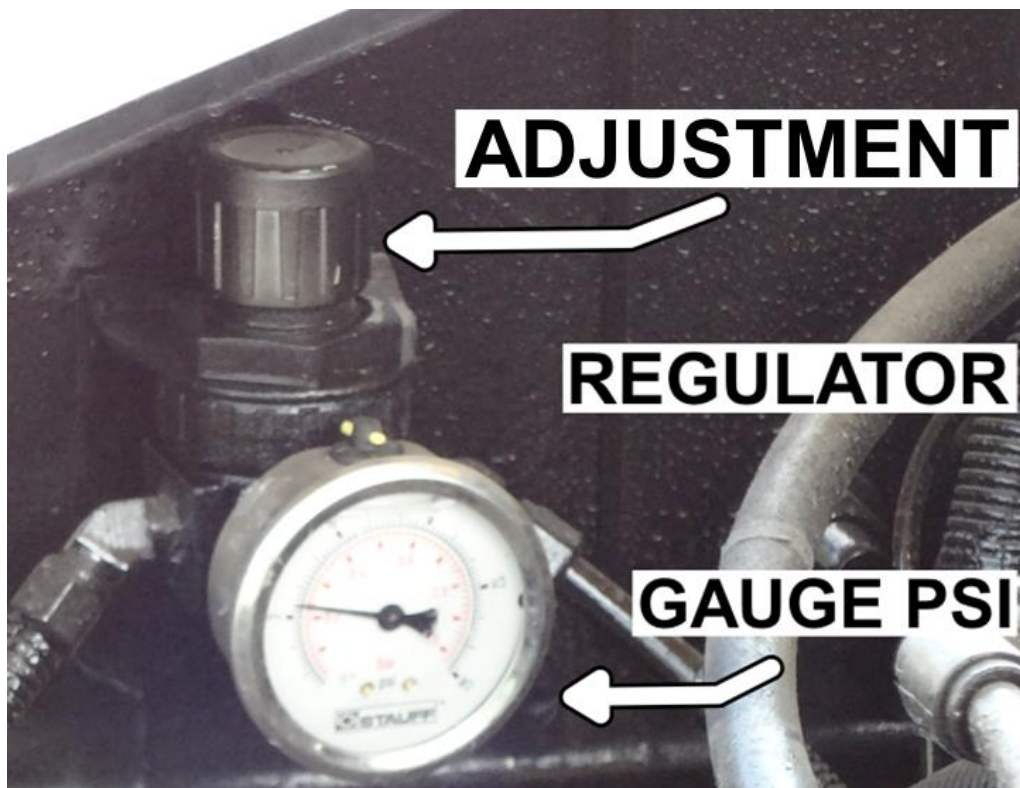
- Regulator (adjusted to 3.5 psi)
- Breather (fixed at 5 psi)
- Safety valve (adjusted to 3.5 psi)

To properly adjust the pressure:

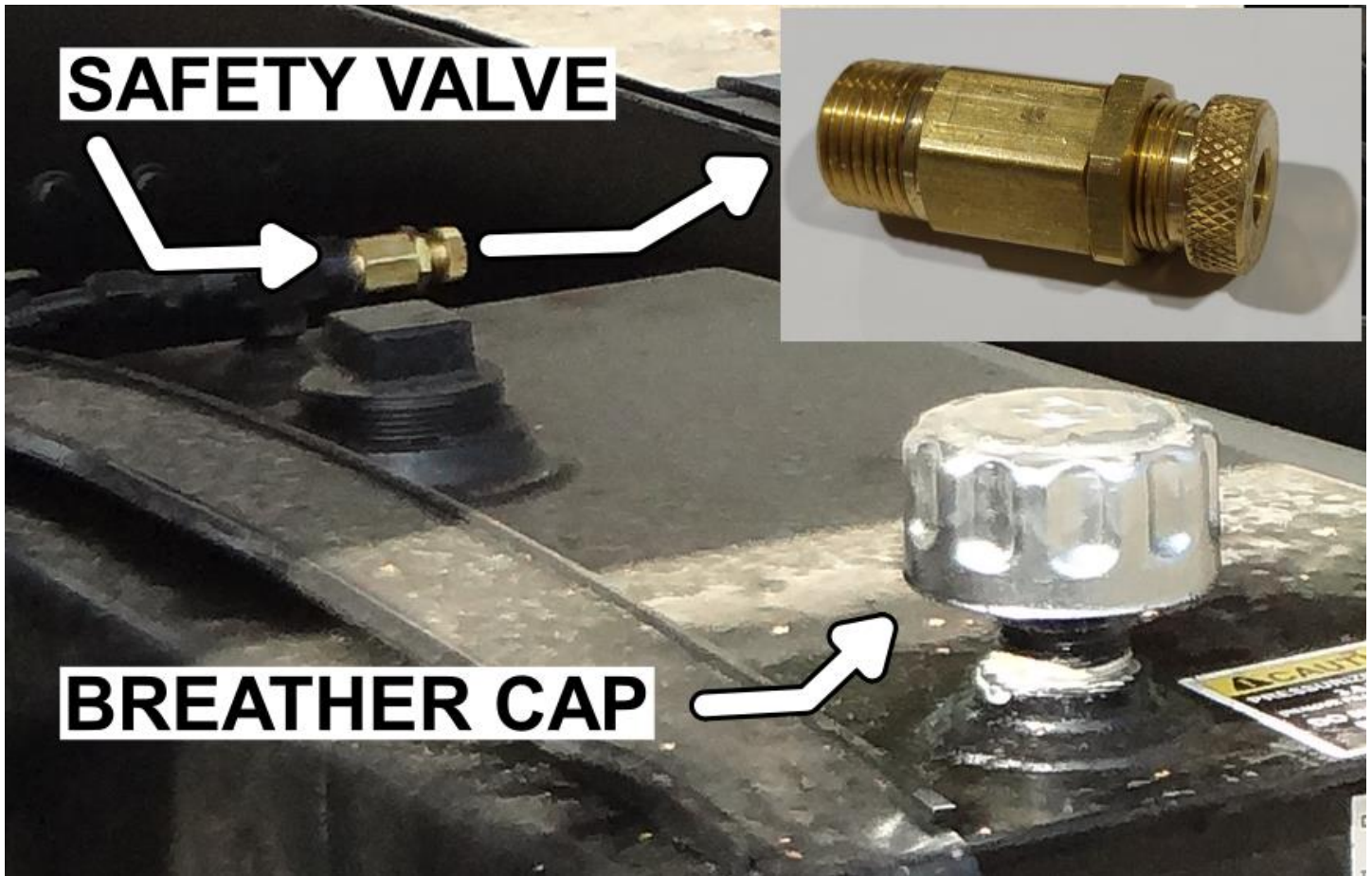
- 1- Fill the tank to 3.5 psi using the regulator and its gauge. Then let it stabilize.
- 2- Screw in the safety valve pressure relief until it stops leaking (using soap on the relief for a visual reference), then tighten it.
- 3- Engage the hydraulic system and cycle some functions.
- 4- Verify the pressure and fine tune if needed.



Please contact the LabriePlus Service Department at **(800) 231-2771 (US)** or **(877) 452-2743 (CAN)** for questions or further information



Please contact the LabriePlus Service Department at **(800) 231-2771 (US)** or **(877) 452-2743 (CAN)** for questions or further information



Please contact the LabriePlus Service Department at **(800) 231-2771 (US)** or **(877) 452-2743 (CAN)** for questions or further information

April 1st, 2023

#23-11



DRIVE EXCELLENCE